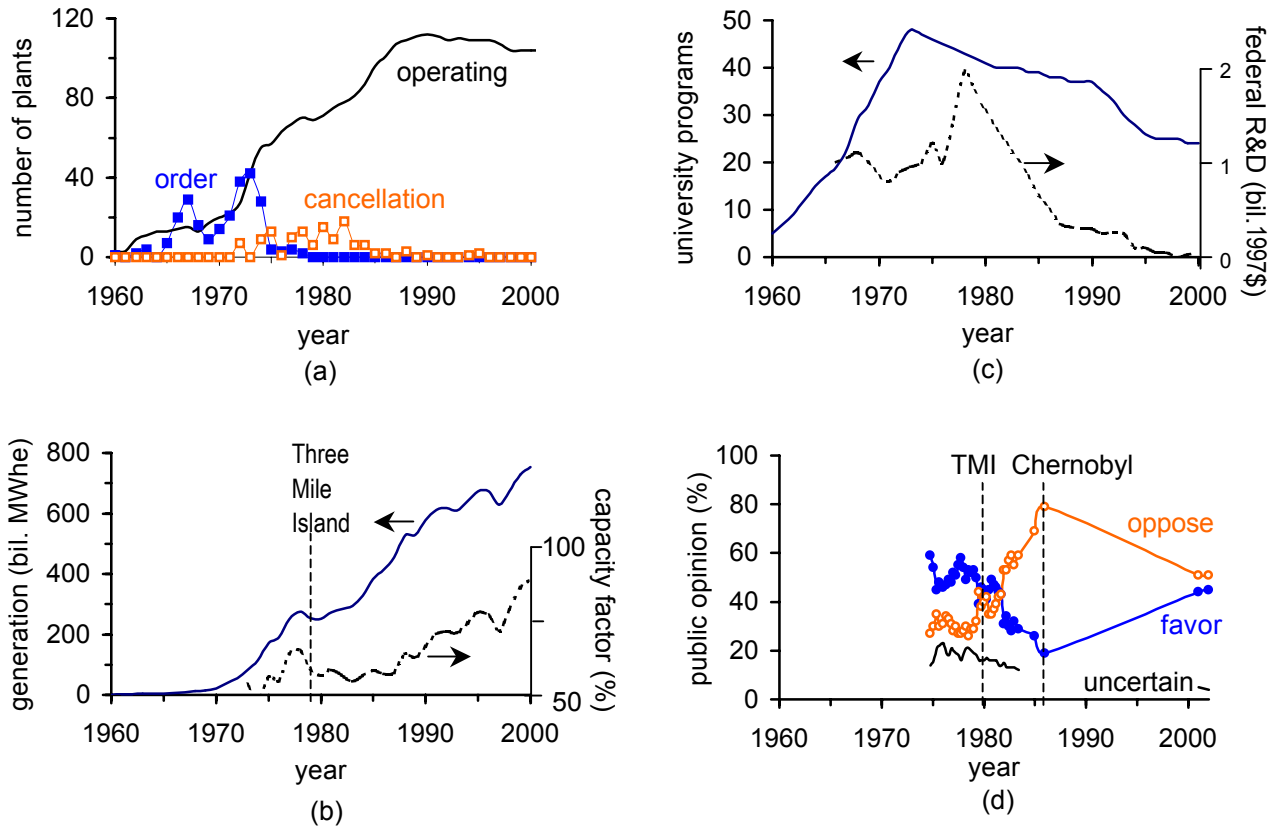


Nuclear power in the United States



(a) Numbers of nuclear power plants ordered and cancelled in each year and the accumulated number of operating units. (b) Net generation of electricity and the averaged capacity factor (actual generation/full capacity) of all nuclear power plants. (c) Number of university nuclear engineering programs and federal R&D funding for nuclear fission. (d) Public opinion on expanding use of nuclear power.

Sources: (a) and (b) Energy Information Administration, *Annual Energy Review 2000*, tables 9.1, 9.2. (c) M. Corradini, et al., www.nuclear.gov/nerac/finalblue.pdf, Fig. 1; J. P. Holdren and S. F. Balwin, *Annual Review of Energy and Environment* 26: 391 (2001). (d) The public opinion data up to 1983 were answers to Cambridge Report's question: "Do you favor or oppose the construction of more nuclear power plants?" S. M. Nealey, B. D. Melber, and W. L. Raukin, *Public Opinion and Nuclear Energy* (Lexington, MA: Lexington Books, 1983); OTA-E-216 (1984), *Nuclear Power in an Age of Uncertainty*, p. 211. The 2001 and 2002 data are from Gallup Poll's question; "Do you generally favor or oppose expanding use of nuclear energy?" www.gallup.com/poll/releases/pr020314.asp. The pollster and question are not known for the points in between, quoted in quoted in C. Flavin, *Reassessing Nuclear Power* (Washington DC: World Watch), p. 67.